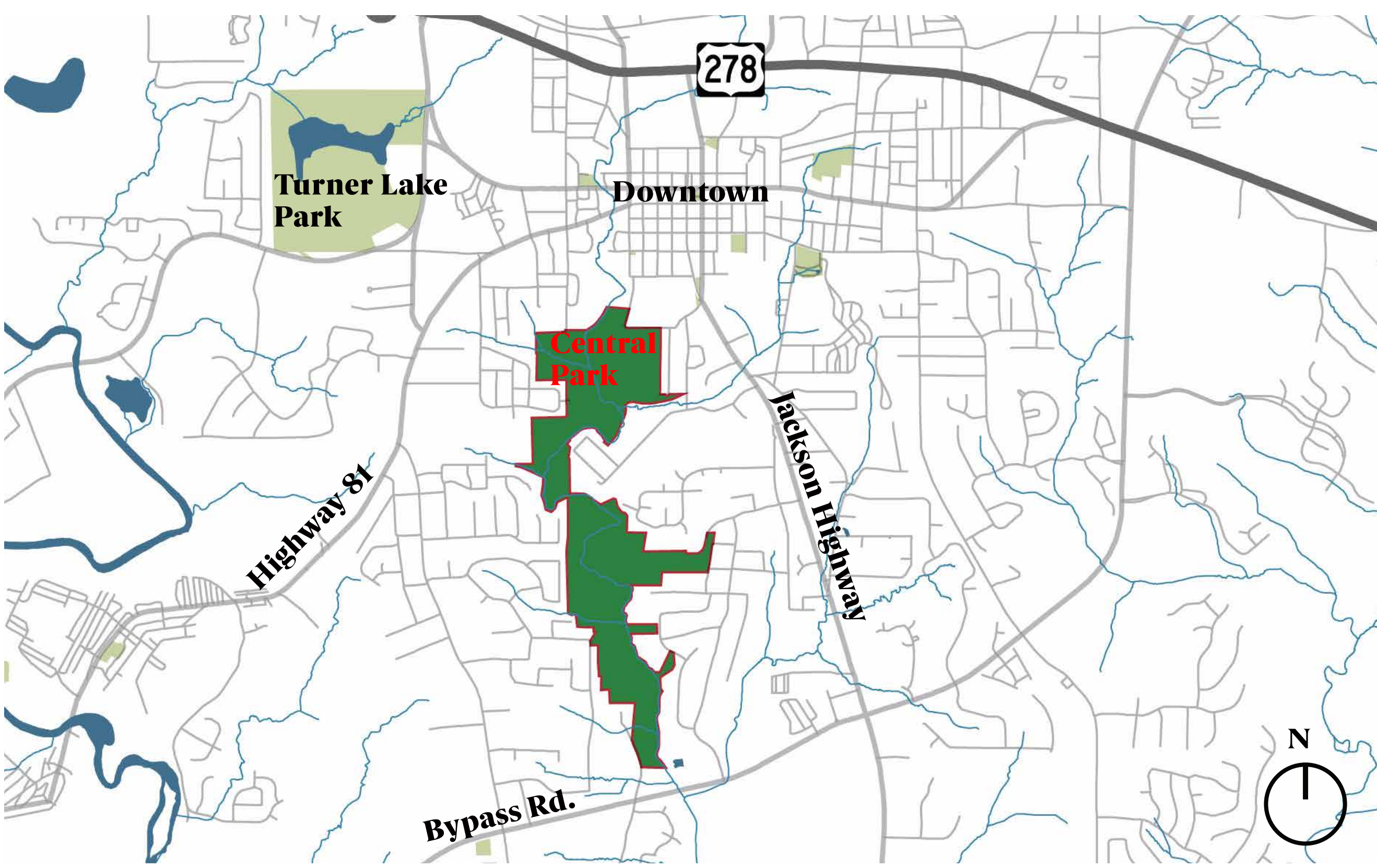


Central Park Conceptual Plan

Overall Plan



Context Map



Overall Goals

1. Connect neighborhoods with a robust trail network.
2. Create spaces for people to gather (lawns, picnic pavilion).
3. Utilize park assets of creeks, dramatic topography, and forest.
4. Make park a destination for visitors from outside of Covington.
5. Attract all ages, but focus on amenities that appeal to younger users.
6. Activate entire park.
7. Create gateway signage to direct visitors to park.

North node



North Key

1. Ex. Parking- 54 spaces
2. Parking area- 90 spaces
3. Skate Park- 33,000 SF
4. Lawn- 29,000 SF
5. Large pavilion
6. Playground- 56,000 SF
7. Restroom
8. Small pavilions-6
9. Tot lot/playground- 15,000 SF
10. Woodland overlook
11. Paved path loop- 1 mile
12. Relocated disc golf holes
13. Unpaved trail
14. Proposed bridge
15. Existing bridge
16. Paved path to south
17. Pedestrian entry point

South node



South Key

1. Nelson Heights Community Center
2. Parking areas- 173 spaces
3. Drop off area
4. Interactive water feature- 29,400 SF
5. Restrooms
6. Large pavilion
7. Playground- 10,000 SF
8. Lawn- 47,000 SF
9. Small pavilions- 5
10. Music play area
11. Overlook/ Canopy walk
12. Creek overlook
13. Paved multi-use path
14. Sculpture/interpretive trail
15. Unpaved trail
16. Bridge
17. Mountain bike Trail
18. Potential county fields
19. Potential county expanded basketball courts
20. Laseter St. Extension

Key Program Elements

