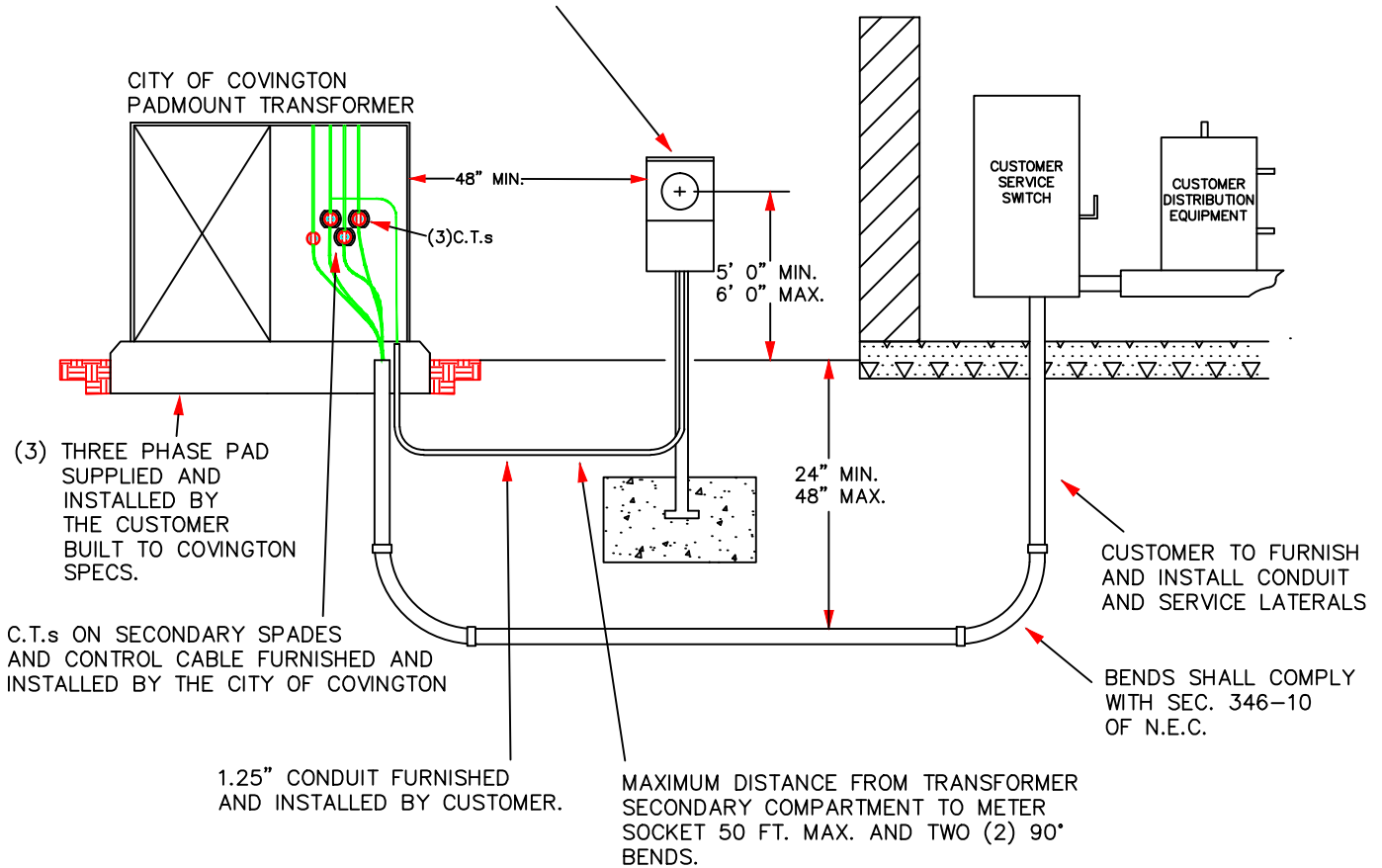


UNDERGROUND COMMERCIAL 3 ϕ TRANSFORMER RATED
METER INSTALLATION WITH ONLY ONE CUSTOMER
(GREATER THAN 400 AMP)

METER SOCKET AND PEDESTAL SUPPLIED BY
THE CITY OF COVINGTON, INSTALLED BY CUSTOMER.
(CUSTOMER MAY MOUNT METER SOCKET ON BUILDING)



NOTES

1. THIS METHOD OF SERVICE MUST BE APPROVED BY THE CITY OF COVINGTON.
2. METER SOCKET MOUNTED OUTDOORS ON A PEDESTAL OR OUTSIDE WALL OF BUILDING.
3. THE CITY OF COVINGTON TO MAKE ALL SERVICE LATERAL CONNECTIONS AT PADMOUNT TRANSFORMER AND CONNECTION INSIDE METER SOCKET AND SECONDARY COMPARTMENT OF TRANSFORMER. CONDUCTOR SHALL BE MARKED BY ELECTRICIAN WITHIN 12" OF CONDUIT IN TRANSFORMER SECONDARY COMPARTMENT.
4. C.T.s TO BE INSTALLED IN SECONDARY COMPARTMENT OF THE PADMOUNT TRANSFORMER BY THE CITY OF COVINGTON
5. THIS METHOD OF SERVICE IS TYPICAL WHEN ONLY ONE 3 ϕ CUSTOMER IS SERVED FROM A PADMOUNT TRANSFORMER.
6. METER AND/OR METER CABINET SHALL NOT BE MOUNTED ONTO THE PADMOUNT TRANSFORMER.



CITY OF COVINGTON
NEWTON COUNTY, GEORGIA

DATE: JANUARY 1, 2016