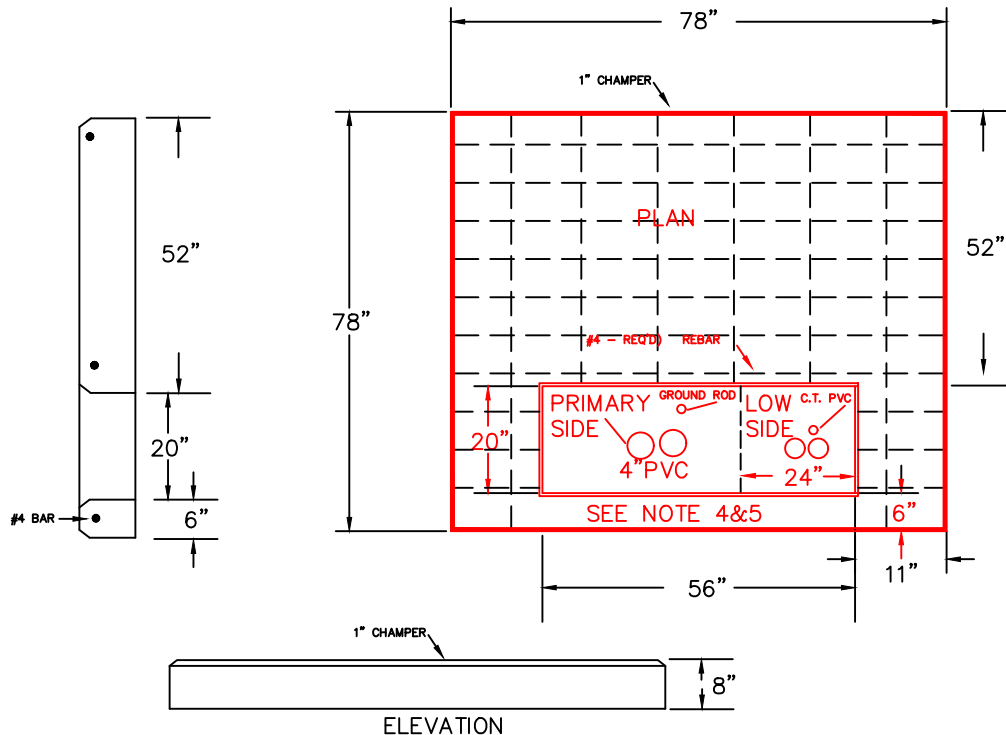


TRANSFORMER PAD SPECIFICATION: 45 KVA – 300 KVA



NOTES:

- 1) 28 DAY CONCRETE STRENGTH – MIN 3000 P.S.I.
- 2) FINISH – LIGHT BROOM
- 3) #4 REBAR 12” O.C. Horizontal & Vertical
- 4) CONTRACTOR – THE RIGHT HAND 24” OF THIS OPENING IS FOR SECONDARY CONDUITS. THE REMANDER IS FOR THE UTILITY’S PRIMARY.
- 5) PROVIDE TWO 4” PVC CONDUITS WITH SWEEPING 90 DEGREE TO OUTSIDE OF PAD AREA 36” Radius FROM PRIMARY SIDE AS DIRECTED. ALSO PROVIDE ONE CONDUIT 90 DEGREE SWEEP FOR GROUNDING CONDUCTOR (MIN 3\4”)
- 6) CITY OF COVINGTON EMPLOYEES WILL MAKE UP THE SECONDARY SIDE OF TRANSFORMER. ELECTRICIAN IS RESPONSIBLE FOR INSTALLATION OF C.T.’S AND METER BASE, IF REQUIRED (PROVIDED BY THE CITY OF COVINGTON). ELECTRICIAN SHALL MOUNT METER BASE ON WALL OR STEEL SUPPORT – PER CITY INSTRUCTION.
- 7) PROVIDE 1.25” CONDUIT ON SECONDARY SIDE FOR THE CITY’S C.T.’S WIRING TO METER BASE.
- 8) TRANSFORMER CLEARANCE SHOULD BE A MINIMUM OF 10 FEET FROM BUILDING, ALSO MAINTAIN AT LEAST A 10 FEET CLEARING ON FRONT (DOOR) SIDE. ALL OTHER A MINIMUM OF 5 FEET.
- 9) FOR FULL SPECIFICATION, SEE PAGE UM1-7 OF CITY OF COVINGTON SPECIFICATION BOOK



CITY OF COVINGTON
NEWTON COUNTY, GEORGIA

DATE: March 31, 2017 REVISD: March 31, 2017

©2016
CITY OF COVINGTON
ALL RIGHTS RESERVED